



CALIFORNIA HEALTHCARE FOUNDATION

Improving Maternal Health through Quality Improvement

Neal Kohatsu, MD, MPH
Medical Director

Julia Logan, MD, MPH
Quality Officer

California Department of Health Care
Services



Sacramento Briefing
October 1, 2014



DHCS Activities

- Institute for Population Health Improvement/California HealthCare Foundation Maternal Health Symposium, June 2014
- California State Innovation Model (CalSIM)
- Adult Medicaid Quality Grant: Maternal Health Quality Improvement project

Maternal Health Symposium, June 2014

- Measures
- Comprehensive approach
- Coverage
- Data
- Incentives
- Research gaps

CalSIM: Role of DHCS

Aims are aligned with DHCS Quality Strategy, including reducing early elective deliveries



Intro to Adult Medicaid Quality Grant (AMQG)

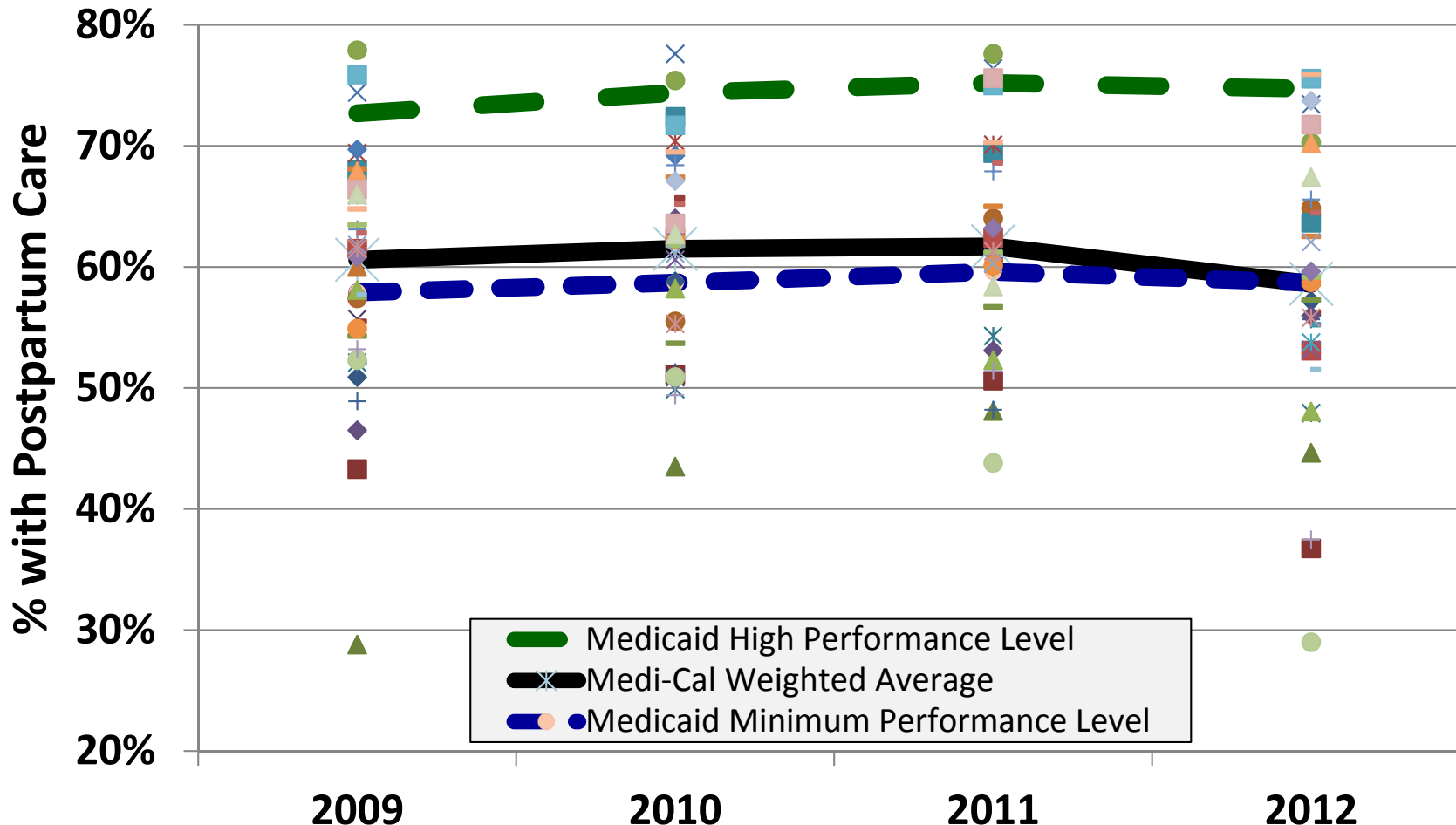
Three main goals:

1. Test and evaluate: Early elective delivery, antenatal steroids, postpartum care
2. Increase staff capacity
3. Implement QI projects for improving postpartum care:
 - Surgery follow-up
 - Contraception
 - Breastfeeding
 - Diabetes follow-up

Data Before the AMQG

- Health care effectiveness data information set (HEDIS)
- Reported by managed care plans
- Aggregate level data
- Validated by an external quality review organization (EQRO)
- Perform at Minimum Performance Level (MPL)

Postpartum Women with Clinic Visit 21-56 Days After Delivery, Medi-Cal Managed Care Plan Counties, 2009-2012



Symbols represent performance levels of different plans

Source: Adapted from:

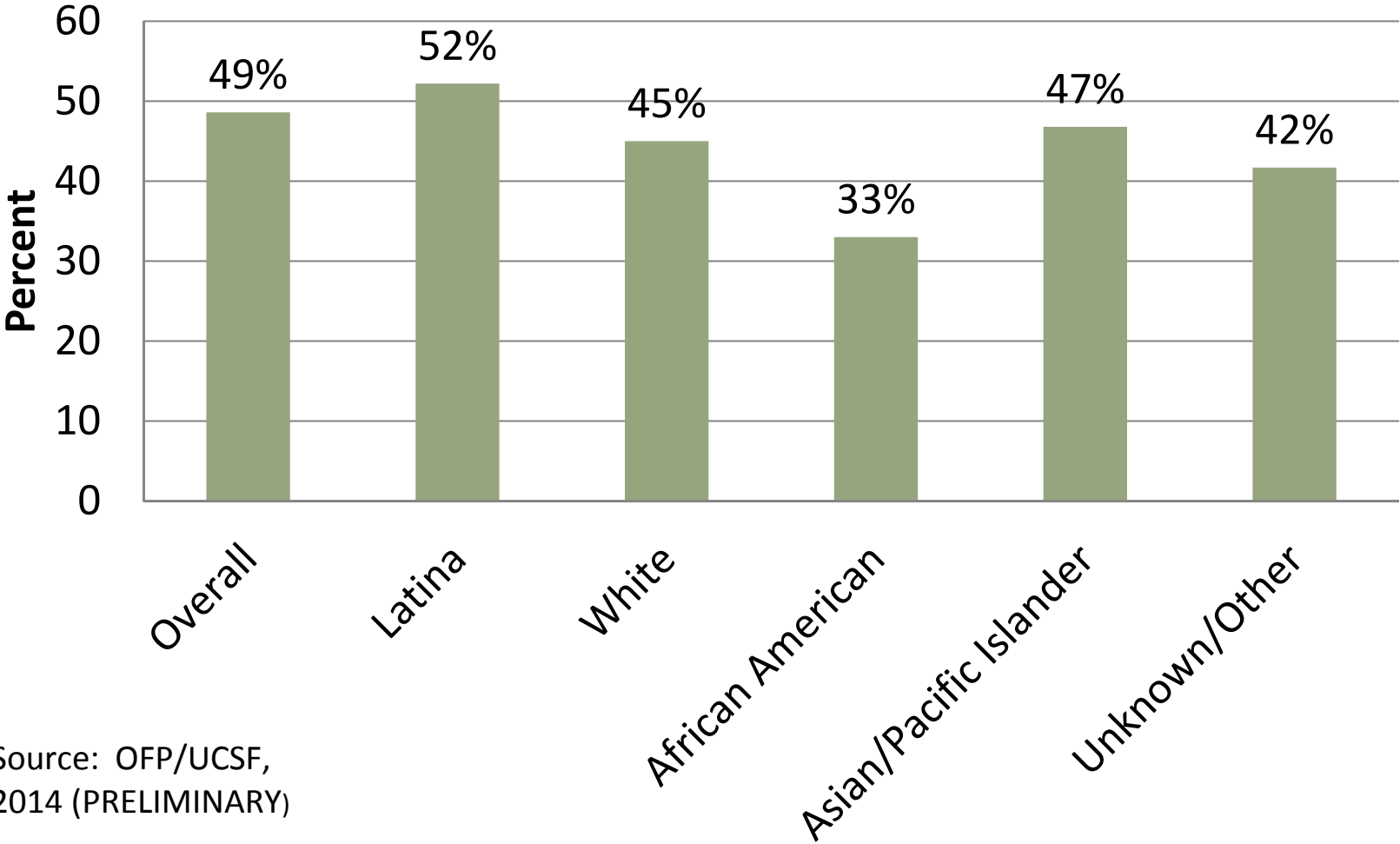
http://www.dhcs.ca.gov/dataandstats/reports/Documents/MMCD_Qual_Rpts/HEDIS_Reports/CA2012_HEDIS.pdf

Stratifications Allowed for Deeper Understanding

AMQG has helped us learn more about Medi-Cal members. Ability to stratify by:

- Race/ethnicity
- Plan type (fee for service vs managed care)
- Primary language
- Rural/urban
- Diabetes status

Percentage of Medi-Cal Women with Timely Postpartum Care, by Race/Ethnicity, 2012



Source: OFP/UCSF, 2014 (PRELIMINARY)

Large Variation in Timely Postpartum Care Among African American Women

- 13.4% of deliveries in managed care are to African American women
- Among six largest plans, range is 21% to 50%

We Have the Data, Now Need to Use It to Drive Quality

- Quality improvement instruction led by Institute for Population Health Improvement (IPHI)
- Cross-departmental collaboration
- Quality improvement basics and beyond
- Managers and supervisors included in training

DHCS Quality Improvement Team Aims

By measurement year 2015:

Aim 1: Increase Medi-Cal weighted average of HEDIS postpartum care measure to 62%

Aim 2: Increase Medi-Cal health plan/ counties above the minimum performance level of postpartum care measure to 75%

Aim 3: Increase African American women with timely postpartum care to 35%

Working Together to Improve Quality

Managed care interventions

- Review of quality improvement projects and improvement plans
- In-home visits
- Pay for performance
- Incentive programs for members
- Provider report card

DHCS interventions

- Investigation/evaluation
- Convene/engage
- Standards
- Outreach to members
- Incentives/disincentives
- IT standards and processes

Next Steps

- 2007-2011 Medi-Cal Birth Statistics Report
- DHCS/ Managed Care Quality Improvement Collaborative
- QI projects and collaboration with California Maternal Quality Care Collaborative
- CalSIM implementation

