

California Federally Qualified Health Centers

Additional quick reference guides available at www.chcf.org.

CALIFORNIA HEALTH CARE ALMANAC QUICK REFERENCE GUIDE

NOVEMBER 2017



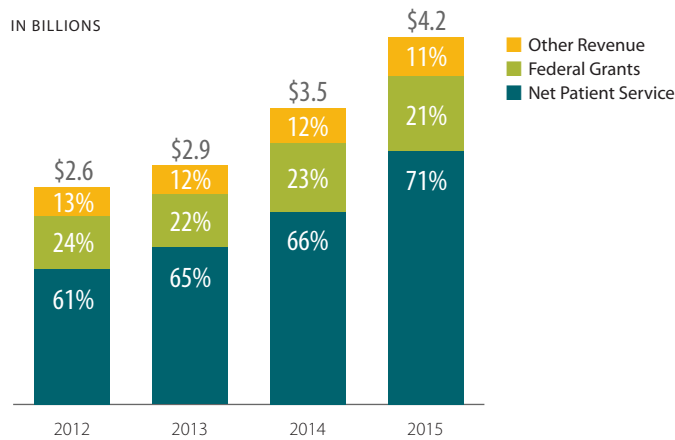
California Health Care Foundation

Facilities	2012	2016	Growth
Organizations	129	176	36.4%
Delivery Sites	933	1,454	55.8%

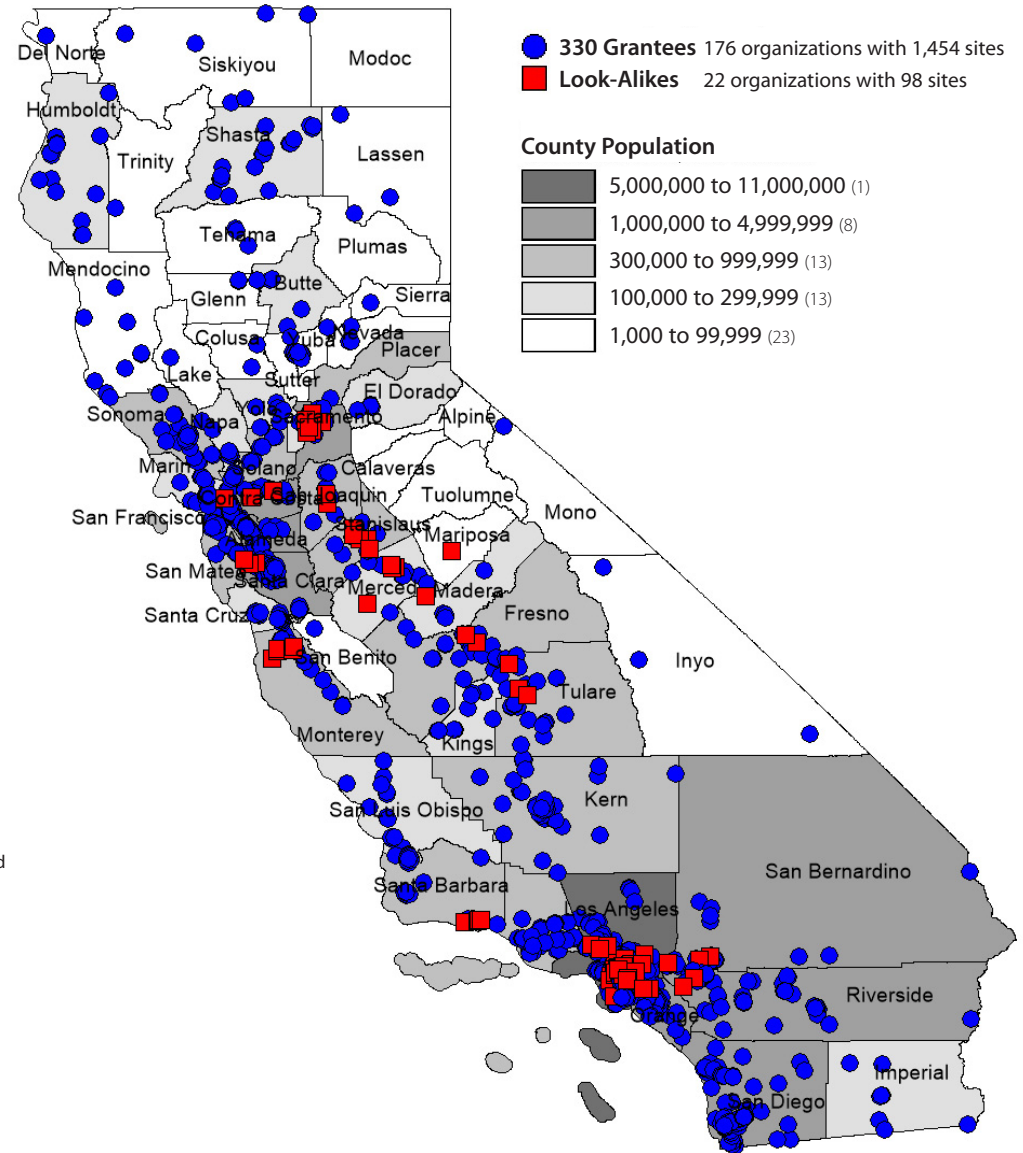
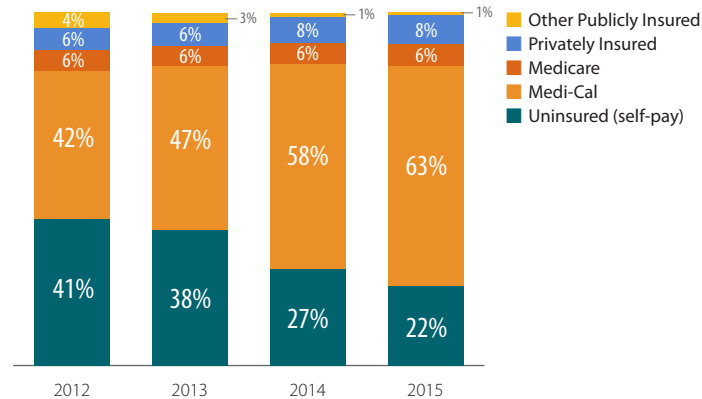
Use	2012	2015	Growth
Total Patients	3,612,446	4,095,628	13.4%
Total Visits	14,146,742	18,077,145	27.8%

Revenue, by Source, 2012 to 2015

IN BILLIONS



Patient Payer Mix, 2012 to 2015



Sources: Uniform Data System, Health Resources and Services Administration (HRSA), 2015. HRSA database for all CA Section 330s and LALs (map as of August 16, 2016). U.S. Census Bureau, county population estimates, 2015.

PRIMARY CARE PATIENTS, BY SERVICE TYPE

	2012	2015	Growth
Medical	2,867,375	3,472,751	21.1%
Dental	589,948	856,818	45.2%
Mental Health	134,039	217,510	62.3%
Vision.	84,806	133,072	56.9%
Substance Abuse	28,972	25,115	-13.3%
Other.	72,538	105,625	45.6%
Enabling.	405,556	502,469	23.9%
TOTAL	4,183,234	5,313,360	27.0%

Percentile Rankings, 2015

TOTAL REVENUE

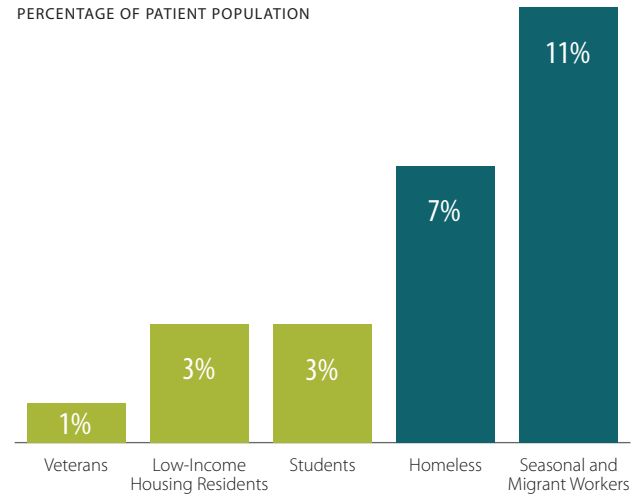
75th High . . .	\$466,618,905
Low	\$27,420,663
50th High . . .	\$27,293,412
Low	\$4,792,338
25th High . . .	\$4,735,336
Low	\$331,120

TOTAL PATIENTS 4,095,628

75th.	27,027
50th.	11,770
25th.	5,199

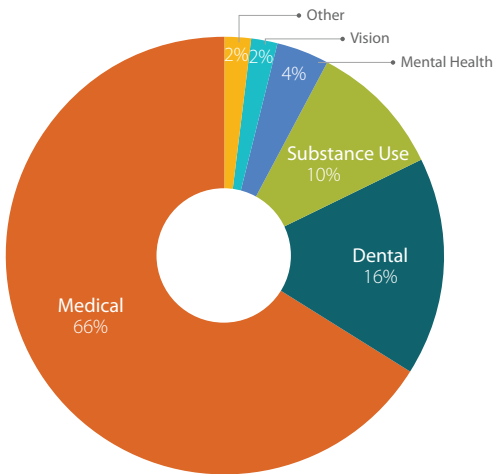
Special Patient Populations, 2015

PERCENTAGE OF PATIENT POPULATION

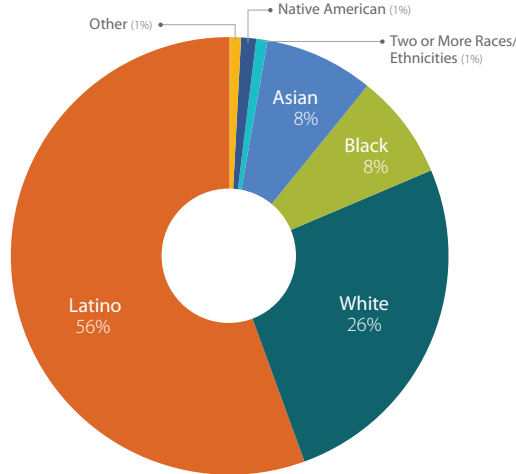


FQHC Patients, 2015

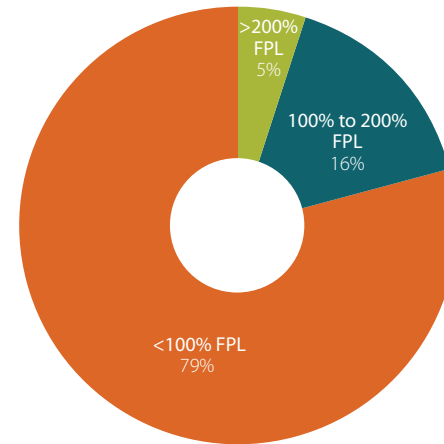
BY SERVICE TYPE



BY RACE/ETHNICITY*



BY INCOME



*Excludes unknown/unreported data.

Notes: In 2015, the federal poverty level (FPL) for an individual was \$11,770 and \$24,250 for a family of four. Segments may not total 100% due to rounding.

Source: Uniform Data System, Health Resources and Services Administration, 2015.