

BEFORE AND AFTER THE ACA

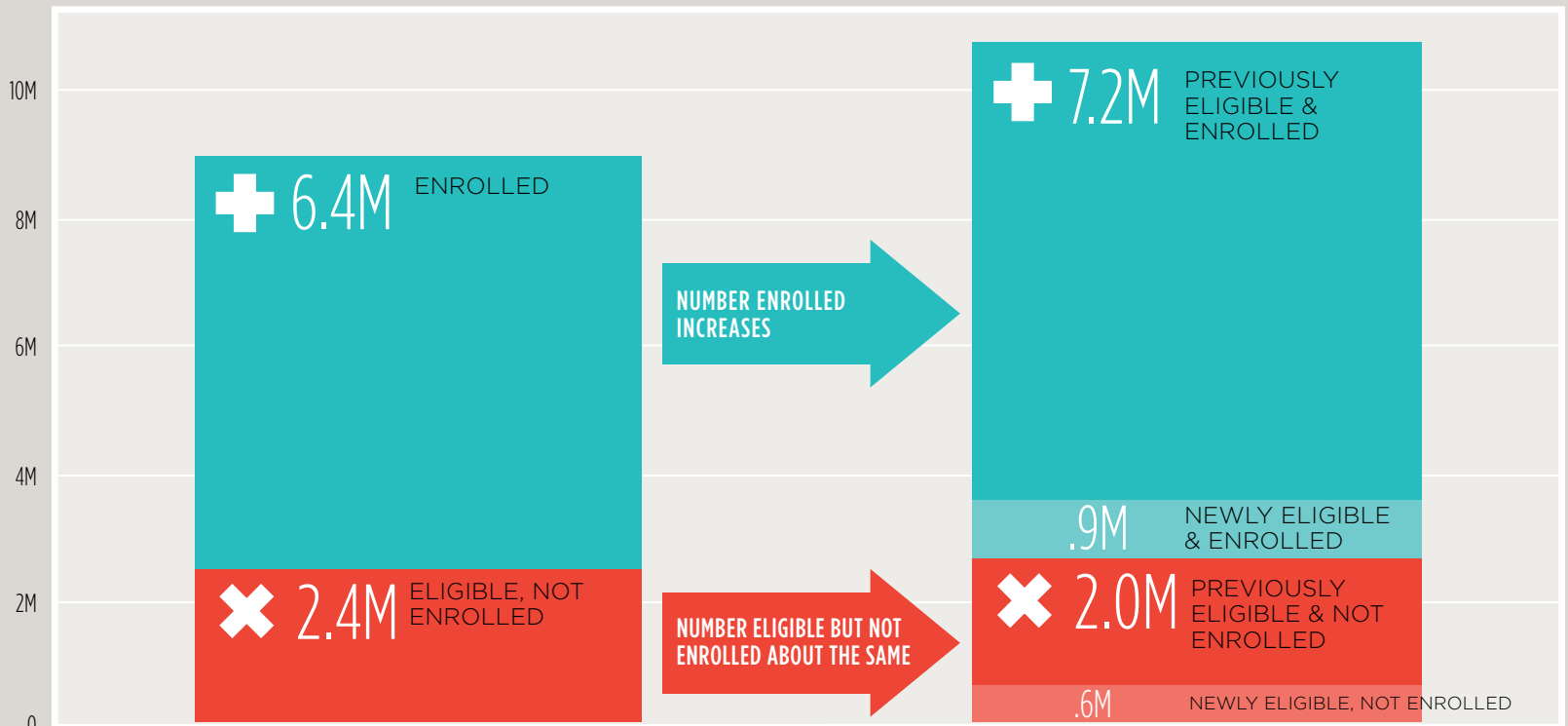
How Will Health Reform Impact Medi-Cal?

2013

8.8M MEDI-CAL-ELIGIBLE CALIFORNIANS
UNDER 65

2019

10.7M MEDI-CAL-ELIGIBLE CALIFORNIANS
UNDER 65



6.4M ENROLLED
2.4M NOT ENROLLED

8.1M ENROLLED
2.6M NOT ENROLLED

DEFINITIONS: "Previously eligible" means eligible under pre-ACA rules for Medi-Cal participation, while "newly eligible" reflects changes made to eligibility guidelines and categories in 2014 due to the ACA.

NOTES: Estimates include a 0.7% average annual population increase based on census projections.

SOURCE: UCB-UCLA California Simulation of Insurance Markets (CalSIM) version 1.8, enhanced scenario.

© 2013 California HealthCare Foundation. For more information, see www.chcf.org/translation.